

DIN 1473

ISO 8740

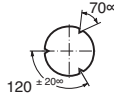
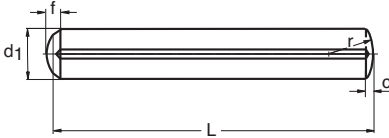
BRIKXSEN**Grooved Pins, Full Length Parallel**

Pernos conico de seguro

Goupilles cannelées cylindriques

A2

A4



d	2	3	4	5	6	8
c	0.25	0.4	0.5	0.63	0.8	1
f	0.8	1.2	1.4	1.7	2.1	2.6

d	L	W
2	8	.198
2	10	.247
2	12	.296
2	16	.395
2	18	.444
2	20	.494
3	8	.444
3	10	.555
3	12	.666
3	16	.888
3	18	.999
3	20	1.11
3	25	1.39
4	8	.789
4	10	.986
4	12	1.18
4	16	1.58
4	18	1.77
4	20	1.97
4	25	2.46
4	30	2.96
4	35	3.45
4	40	3.94
5	10	1.54
5	12	1.85
5	16	2.46
5	18	2.77

d	L	W
5	20	3.08
5	25	3.85
5	30	4.62
5	35	5.39
5	40	6.16
6	10	2.22
6	12	2.66
6	16	3.55
6	18	3.99
6	20	4.44
6	25	5.55
6	30	6.66
6	35	7.77
6	40	8.88
8	10	3.95
8	12	4.74
8	16	6.32
8	18	7.11
8	20	7.90
8	25	9.80
8	30	11.8
8	35	13.7
8	40	15.7
8	45	17.7
8	50	19.6
8	60	23.6

(W ~ Weights of standard sizes in kilograms per 1000 pieces)